

# Torsional Vibration Table

The Torsional Vibration Table converts the linear vibration of a shaker into torsional vibration of a rotary shaker, thus expanding your linear shaker's capability to perform torsional vibration testing. It is the only way to achieve torsional vibration at frequencies above 1,000 Hz.

Typical uses for torsional vibration studies of sensitive electronics include avionics, micro promoted circuit boards, mobile phone and inertial guidance systems.

The Torsional Vibration Table is expertly designed to include three hydrostatic bearings. One large journal bearing defines the axis of rotation, a thrust bearing carries the vertical static load, and a spherical drive coupling in the connecting arm allows for the angular rotation of the table. The drive arm bearing center line varies by model (R1900 - 12 in, R2000 - 14.5 in). With that dimension you can calculate the angular acceleration knowing the shaker acceleration. Inserts in any desired pattern may be installed on the top mounting surface.



R-1900 Shown

## Features

- Customer specified insert pattern
- Extend linear shaker versatility
- Reaction bases adjustable to match existing shaker centerline
- Hydrostatic friction. free bearing
- Virtually no maintenance

## Applications

- Rotational vibration tests of heavy payloads
- High frequency excitation\*
- Rotary vibration fatigue tests

*\*Shaker Dependent*

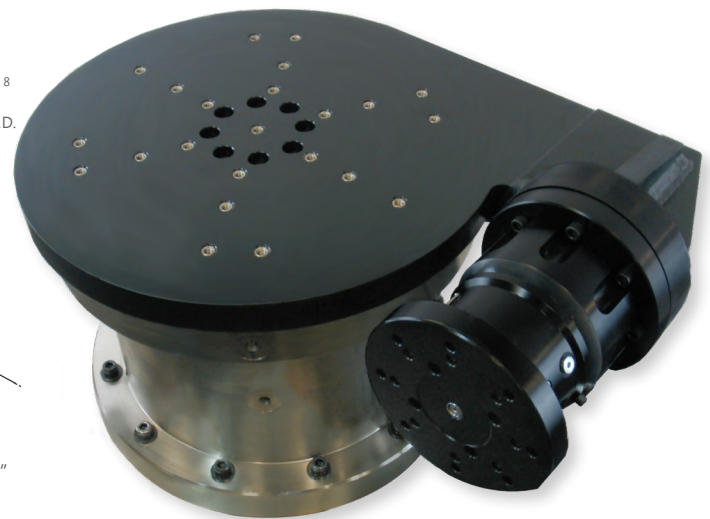
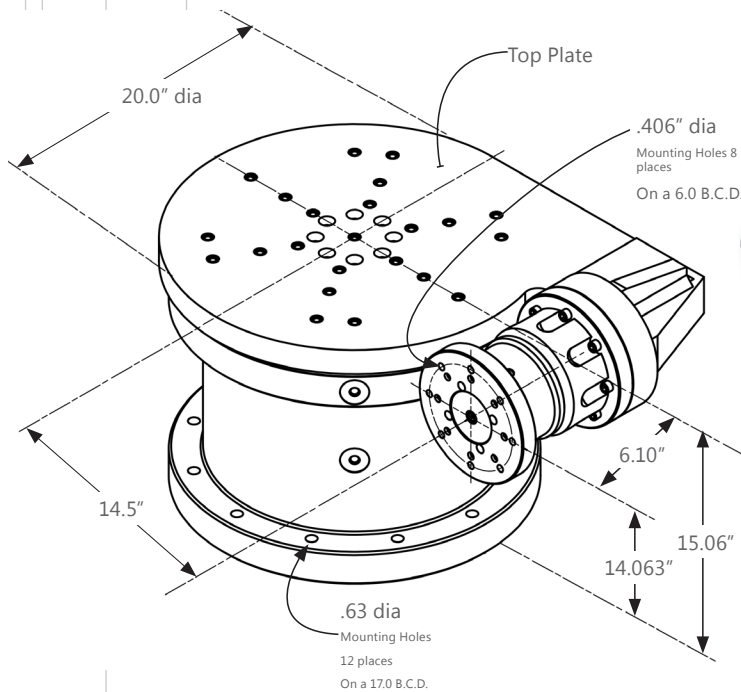


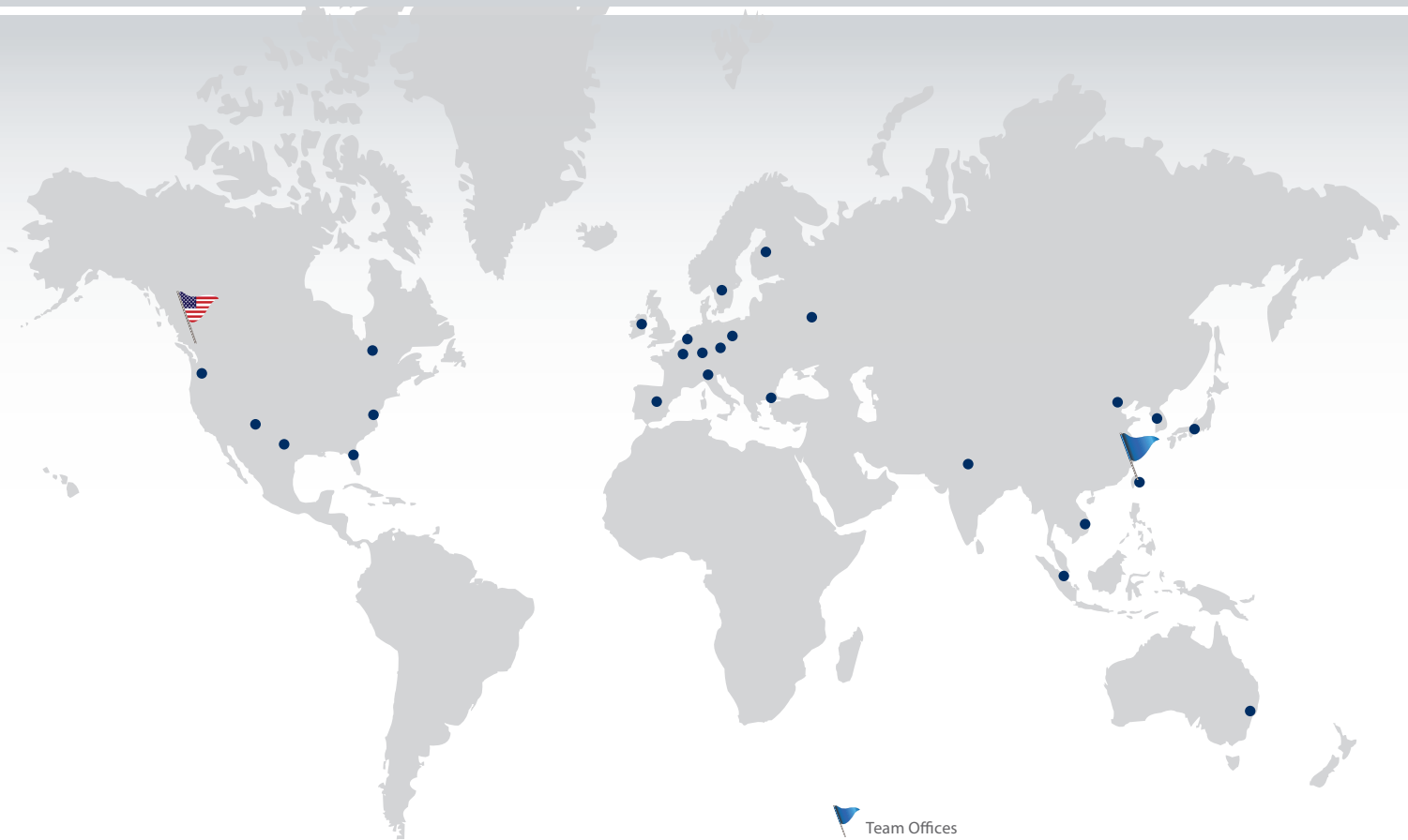
# Specifications

## R-2000

	R-2000 - AL	R2000 - M
Moving Wt. (connecting arm)	25 lbs (11.33 kg)	25 lbs (11.33 kg)
Moving Mass	157 lbs (71.21 kg)	129 lbs (58.5 kg)
Radius of Gyration*	7.17 in (182.18 mm)	6.51 in (165.44 mm)
Maximum Angular Rotation	+/- 4.0 deg	+/- 4.0 deg
Mass Movement of Inertia	8065 lbm-in <sup>2</sup> (23,601 kg-cm <sup>2</sup> )	5453 lbm - in <sup>2</sup> (15958 kg-cm <sup>2</sup> )
Mounting Surface	20.0in (508 mm)	20.0in (508 mm)
Vertical (Compression Only)	8,000 lbs (3,628 kg)	8,000 lbs (3,628 kg)
Connecting Arm Dynamic Force	10,000 lbs (4,545 kg)	10,000 lbs (4,545 kg)
Maximum Linear Displacement	+/- 1.0 in (25.4 mm)	+/- 1.0 in (25.4 mm)
Shipping Wt.	870 lbs (394.6 kg)	842 lbs (382.6 kg)

\*Of Top Plate & Bearing Shaft





 Team Offices

• Authorized Sales Agents

[sales@teamcorporation.com](mailto:sales@teamcorporation.com)

**Corporate Headquarters**  
11591 Watertank Road,  
Burlington, WA 98233, USA  
+1.360.757.8601  
[teamcorporation.com](http://teamcorporation.com)

**Asia Pacific**  
Rm 2005 Minhang Plaza  
18 Xinqinqiao Road, Pudong  
201206 Shanghai, China  
+86.21.3382.0671  
+1.831.655.6677

Engineered vibration testing solutions for improved product quality

