

# 900 Series Analyzer for Quattro

DP940

SignalCalc 900 Series Dynamic Signal Analyzer software now fully supports the popular USB-powered Quattro hardware platform. With thousands in service worldwide, Quattro has delivered proven value and is trusted by engineers and technicians in Power & Process, Electronics Manufacturing, Military/Aerospace industries, as well as University R&D settings.

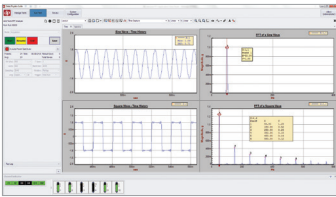
When used with SignalCalc 900 Series software, Quattro users continue to enjoy easy-to-use functionality for popular applications such as general FFT analysis, structural/modal analysis with MEscape, and rotating machinery analysis. SignalCalc 900 Series software also delivers many valuable new features and benefits to Quattro users.



Feature	Benefit
Relational Database	Automatically indexed tests and setups, and flexible search criteria enable easy retrieval, editing, and export of test setups and data
Channel and Signal Math	Create virtual channels (Channel Math) and user-defined functions (Signal Math) that apply math operations directly to signals in real time
RMS Monitoring	Real-time trend graph of rms values for monitoring of levels over time
Multi-Recorder	Record up to four independent time histories simultaneously at different sample rates
Auto-Export	Automatic export of recorded files to Matlab, UFF and other formats
Enhanced Sampling	Up to 204.8 kSamples/sec and 51,200 lines of resolution
High Voltage	Input voltage range of +/- 20 V on each channel
Time History Recording Editor	Cut, paste, filter, or resample time histories to create a new time history for analysis
Multi-Measurement	Perform any two measurements (for example APS and ORD) simultaneously in real time
DP240 Data Compatibility	Manage and view setups and data previously recorded with DP240 software

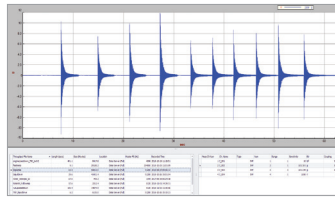
## Applications

SignalCalc 900 Series software delivers modernized features and functions to users of the Quattro hardware platform:



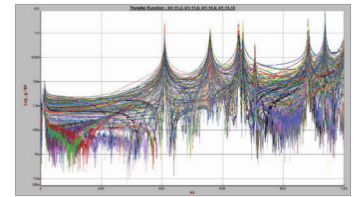
### FFT Analysis DP940-10

Acquire and analyze data using auto and cross spectrum, transfer function, auto and cross correlation, histogram, and synchronous averaging



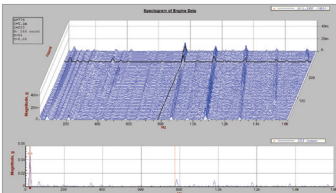
### Recording and Playback Analysis DP940-23

Record data up to 204.8 k samples/second simultaneously with real-time measurement with recording sample rate independent of the measurement sample rate



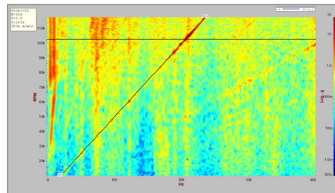
### Structural Analysis DP940-10, -71

Acquire and analyze data to characterize a structure in terms of its frequency, damping and mode shapes



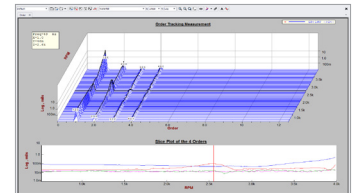
### Waterfall Analysis DP940-25

Acquire and analyze multiple FFTs paced on time, averages or rpm intervals to create a 3D view of frequency content variation over time or rpm



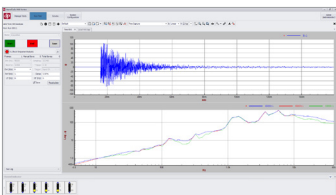
### RPM Analysis DP940-11, 25

Acquire and analyze fixed frequency span FFTs, paced by delta time or rpm into waterfall displays for rotating machinery analysis



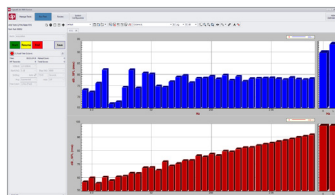
### Order Tracking Analysis DP940-11, 25

Acquire and analyze constant sample-per-revolution FFTs, paced by delta time or rpm into waterfall displays for rotating machinery analysis



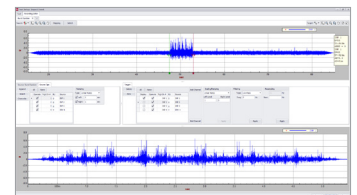
### SRS Analysis DP940-28

Acquire and analyze transient events from field measurements or laboratory shock machines



### Realtime Octave Analysis DP940-26

Acquire and analyze data using real-time octave bands implemented by digital filter banks that conform to ANSI specifications



### Time History Recording Editor DP940-23E

Graphical tool for editing (cut, paste, filter or re-sample) time-history data files from both native and external sources

NOTE: Continued product improvement necessitates that Data Physics reserves the right to modify these specifications without notice.